



# ANGLock® D-SERIES VISES

## Models:

D40 D675 D688® D810 D100

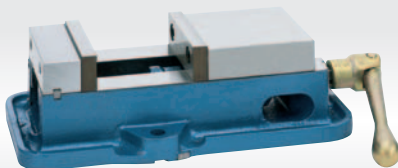


The original Kurt Anglock D-Series vises are designed for precision part clamping on basic machine tools such as knee-type mills, grinders and machining centers. D-Series vises are ideal for use in running production parts where datums, flatness and parallelism is important. You can precision bore, tap, drill, grind and finish with high accuracy on most parts made of die cast aluminum, steel, and iron in your Kurt Anglock vises. No other brand can give you the time proven accuracy of the Kurt Anglock vises.

All Kurt vises have a friction reducing, needle bearing, thrust collar. The needle bearing increases jaw clamping pressure.

### Features of All D-Series Vises Include:

- AngLock design assures the movable jaw does not lift.
- Hardened vise bed.
- Hardened jaw plates.
- Semi-hard steel screw.
- 80,000-PSI ductile iron body.
- Matching of bed height  $\pm 0.001$ " available at an additional cost for the D40 and D100 vises.
- Matching of the keyway to the stationary jaw  $\pm 0.001$ " is available at additional cost.
- Some models available in metric version.



### D40

The D40 vise is recommended for intermediate milling and grinding work. It is an ideal vise for use in matched multiples for holding long parts. With jaw plates in their outside positions, this 4" vise has a 10-5/16" capacity.

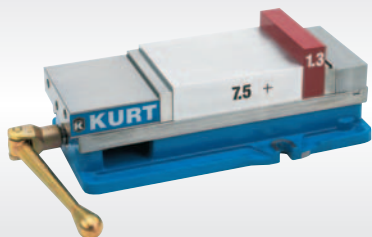


### D675

The D675 has a new vise body with four major improvements:

- Powder coat paint resists peeling.
- Machined rail allows precision alignment.
- A 7-1/2" jaw opening.
- Stationary jaw features an integral key and larger fasteners that reduces deflection by 50%.

Bed height matched to size 2.875" (73.025mm)  $\pm 0.0005$ ". Patented "O" ring pull down feature is standard. Parts from the previous body style are interchangeable with this new one.



### D688®

- Large 8.8" jaw opening.
- Outside rail edges of the body are machined.
- Vise nut does not extend beyond the end of the vise body.
- D688 has the same footprint as the D675 vise. Distance from keyway to stationary same as D675.
- Groove Lock jaw (D60-315) and workstop (WSRL46) standard.
- Patented "O" ring pull down feature standard.

- Approximately a 20% increase in clamping pressure over D675 vise.
- Distinctive patented design of the "Kurt Look".
- Patented AngLock design.
- Bed height matched to size 2.875" (73.025 mm)  $\pm 0.0005$ ".
- Repeatability within 0.001".
- Sealed needle thrust bearing used at hex end of screw to reduce clamping friction.

# ANGLock® D-SERIES VISES

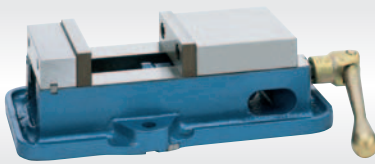


## D810 - New, Easier Operation

Kurt's new D810 features a new updated body style:

- Top down, four bolt design on the stationary jaw reduces vise deflection by 25 percent while allowing total disassembly of the vise without removing the body from the machine table. Special brush seals shield and protect vise screw threads from machined chips and residue.

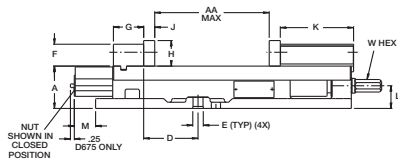
- The nut has been shortened so as not to protrude past the end of the vise body. New powder coat paint finish resists coolant-induced peeling for greater corrosion protection. The overall vise footprint is identical to earlier models so both can be used interchangeably and in tandem.
- With a jaw opening of 10" and clamping force up to 11,600 lbs., the D810 vise locks parts precisely including very large parts for aggressive "hogging out" operations.



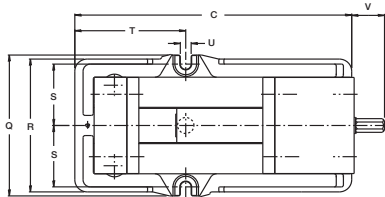
## D100

The D100 is the largest and strongest of our general purpose vises. With 9-3/4" of jaw opening, it has the capacity and strength to take on your highest horsepower milling cuts. It's the most precise and rugged 10" production vise in the world.

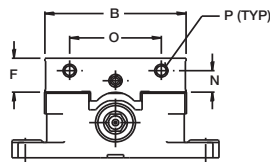
### SIDE VIEW



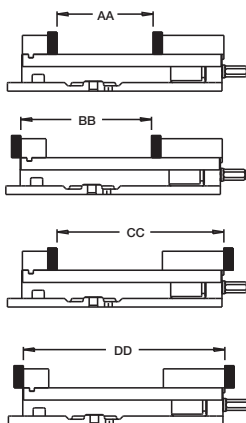
### TOP VIEW



### FRONT VIEW



### JAW PLATE POSITION



### MANUAL VISE CLAMPING FORCE-LBS.

Torque Ft.-Lbs.	D40	D675	D688	D810	D100
10	1653	989	1129	-	-
20	2923	1776	2242	1834	1698
30	4103	2848	3337	-	-
40	5241	3628	4148	3843	3300
50	6513	4365	5379	-	-
60	7807	5432	6310	4349	4686
70	-	6111	6977	-	-
80	-	6721	7968	5706	6623
100	-	-	-	7042	7842
120	-	-	-	8688	9970
140	-	-	-	10413	11429
160	-	-	-	11596	12792
180	-	-	-	-	14681
200	-	-	-	-	16163
220	-	-	-	-	18124
240	-	-	-	-	20563
260	-	-	-	-	22093
280	-	-	-	-	24077
300	-	-	-	-	26277

### DIMENSIONAL DATA

	D40	D675	D688	D810	D100
A	2.250	2.875	2.875	3.310	3.875
B	4.000	6.000	6.000	8.000	10.000
C	12.340	16.750	16.810	21.810	27.500
D	2.562	3.562	3.562	4.686	5.875
E	0.500	0.688	0.688	0.813	0.813
F	1.115	1.485	1.485	1.965	2.465
G	1.355	1.980	1.980	3.652	2.950
H	1.235	1.735	1.735	2.200	2.937
J	0.547	0.725	0.725	1.075	1.320
K	4.000	4.800	4.800	6.190	8.630
L	1.281	1.540	1.540	1.865	2.225
M	-	1.390	-	-	-
N	0.687	0.940	0.940	1.220	1.625
O	2.500	3.875	3.875	4.750	5.750
P	3/8-16	1/2-13	1/2-13	5/8-11	3/4-10
Q	6.380	8.750	8.750	11.500	14.500
R	5.750	8.250	8.250	11.000	13.250
S	2.625	3.813	3.813	4.940	6.188
T	4.860	6.710	5.667	8.500	10.590
U	0.531	0.656	0.656	0.880	0.940
V	0.700	2.000	1.930	2.375	1.690
W	9/16	0.750	0.750	0.875	1
AA	3-7/8	7.5	8.8	10	9-3/4
AA MIN	0	0	0	0	0
BB	5.750	10.500	11.500	14.730	14.000
BB MIN	1.400	3.000	2.700	4.730	3.500
CC	8.4375	13.125	14.320	17.260	19.750
CC MIN	4.100	5.800	5.600	7.260	9.200
DD	10.3125	15.875	17.030	21.990	24.750
DD MIN	5.900	8.500	6.800	11.990	13.500
Ship Wt.	32	78	78	158	300

### Repair Kits

MODEL	REPAIR KIT
D30	*D30-KIT
D40	*D40-KIT
D50	*D50-KIT
D60	D60-KIT
D675	*D675-KIT
D688	*D688-KIT
D80	D80-KIT
D810	*D810-KIT
D100	D100-KIT

\* = Same as Metric Vise