



VISE ACCESSORIES

InnerLock® Jaw Plates



InnerLock Individual Jaws	4" Vise		6" Vise		8" vise	
Jaw Type	Part #	Ship Wt.	Part #	Ship Wt.	Part #	Ship Wt.
SINGLE STEP	AJ400-32	1 Lb.	AJ600-32	2 Lbs.	AJ800-32	6 Lbs.
DOUBLE STEP	AJ400-236	1 Lb.	AJ600-236	2 Lbs.	AJ800-236	5 Lbs.
ALUMINUM	AJ400-234	1 Lb.	AJ600-234	1 Lb.	AJ800-234	2 Lbs.
SEMI-HARD STEEL (4150)	AJ400-235	1 Lb.	AJ600-235	3 Lbs.		
SERRATED	AJ400-47	1 Lb.	AJ600-47	2 Lbs.	AJ800-47	6 Lbs.
V JAW HARDENED & GROUND	AJ400-237	2 Lbs.	AJ600-237	5 Lbs.	AJ800-237	10 Lbs.
BOLTS-D (4) PIECES	00-3353	1 Lb.	00-3417	1 Lb.	00-3481	1 Lb.
BOLTS-PT (4) PCS.	00-3353	1 Lb.	00-3417	1 Lb.	00-3481	1 Lb.
BOLTS-DL (4) PCS. (STATIONARY)	00-3348	1 Lb.	00-3412	1 Lb.	-	-
BOLTS-DL (4) PCS. (MOVABLE)	00-3353	1 Lb.	00-3417	1 Lb.	-	-

Jaws for HDL Vises	Part #		Dimensions	
HDL SERIES VISE – MOVABLE (4)	AJ600-89	LHSCS	M12 x 1.75	30mm Lg
HDL SERIES VISE – STATIONARY (4)	AJ600-143	LHSCS	M12 x 1.75	16mm Lg

With the InnerLock jaw plates, it takes only 40 seconds to change. By minimizing down time, the unique reversible feature saves you money on the jaw plates. Each jaw plate can be mounted in two directions, giving you two jaw plates for the price of one. For instance, the plain jaw plate when in the inverted position has a step for holding small parts closer to the spindle. Our small through-hole design allows for greater gripping surface.

INNERLOCK JAW PLATE DIMENSIONS																							
Part #	Aluminum			Semi Hard			Single				Double Step				Serrated			V-Jaw					
	W	L	H	W	L	H	W	L	H	STEP	W	L	H	ST 1	ST 2	W	L	H	W	L	H	SM 0	LG 0
AJ400	0.730	3.969	1.374	0.730	3.969	1.374	0.570	3.969	1.374	0.125	0.547	3.969	1.374	0.250	0.500	0.547	3.969	1.374	1.125	3.969	1.374	0.100	1.500
AJ600	0.9810	5.969	1.880	1.125	5.969	1.880	0.725	5.969	1.880	0.188	0.735	5.969	1.880	0.375	0.750	0.725	2.969	1.880	1.875	5.969	1.880	1.125	3.000
AJ800	1.230	7.969	2.440	-	-	-	1.075	7.969	2.440	0.250	1.075	7.969	2.440	0.500	1.000	1.075	7.969	2.440	2.375	7.969	2.440	0.150	4.500

InnerLock jaws require low silhouette SHCS.

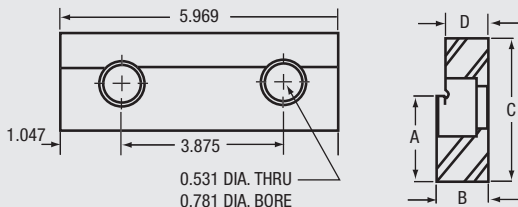
Machinable Aluminum Jaw Plate For All Kurt 6" Vises



XJAB6A-318

- 6" Aluminum (6061-T6) soft jaw. Fits all Kurt 6" vises.
- Reversible top to bottom and front to back, (Counter bore both sides).
- Extra thickness for carving part shapes into jaw plate.
- 5.969" L x 1.500" W x 1.874" H.

Standard Individual Jaw Plates



Part #	Dim "A"	Dim "B"	Dim "C"	Dim "D"	Description
60-32-1	1.693	0.725	1.880	0.610	STEPPED JAW
60-236-1	1.505	0.725	1.880	0.610	STEPPED JAW
60-236-2	1.130	0.725	1.880	0.610	STEPPED JAW
*60-234-1	NONE	0.980	1.880	0.980	ALUMINUM
*60-235-1	NONE	1.125	1.880	1.125	STEEL
LP60-32	1.469	0.725	1.635	0.610	STEPPED JAW
*60-47-1	NONE	0.725	1.735	0.725	SERRATED JAW

*60-234-1 is a carve your own pocket jaw plate.
 *60-235-1 is a carve your own pocket jaw plate.
 *60-47-1 Serrations are aggressive and will mark parts.

Jaw Type	4" Vise		6" Vise	
	Part #	Wt.	Part #	Wt.
HARDENED	D40-7	1 Lb.	D60-7	2 Lbs.
SOFT	D40-7-SOFT	1 Lb.	D60-7-SOFT	2 Lbs.
STEPPED	See InnerLock		See InnerLock	
SERRATED	See InnerLock		See InnerLock	

Jaw Type	8" Vise		10" Vise	
	Part #	Wt.	Part #	Wt.
HARDENED	D80-7	5 Lbs.	D100-7	6 Lbs.
SOFT	D80-7-SOFT	5 Lbs.	D100-7-SOFT	6 Lbs.
STEPPED	See InnerLock		-	
SERRATED	See InnerLock		D100-47	6 Lbs.