

CARBIDE



Being the best through innovation



CARBIDE TAPS

GEWINDEBOHRER

- Tapping Cast Iron and High Silicon Aluminium, Mass Production, High Productivity
- Zum Gewinden von Guss und Aluminium mit hohem Siliziumanteil; für Großserien, hohe Produktivität

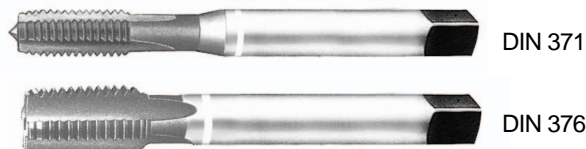
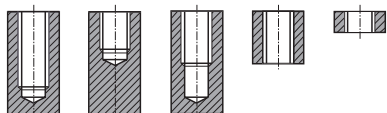
M ISO metric coarse threads DIN 13

Metrisches ISO-Gewinde DIN 13

► Carbide tap can increase tool life longer than HSS taps due to higher hardness. Suitable for cast iron and high silicon aluminiums.

► Der VHM-Gewindebohrer kann die Lebensdauer gegenüber HSS-Gewindebohrern erhöhen dank der größeren Härte. Geeignet für Guss und Aluminium mit hohem Siliziumanteil

Hole type



Material groups

GG

HM

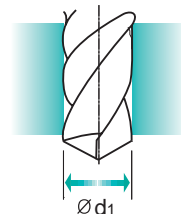
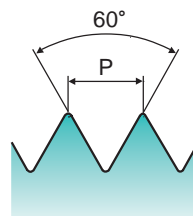
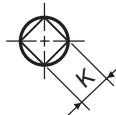
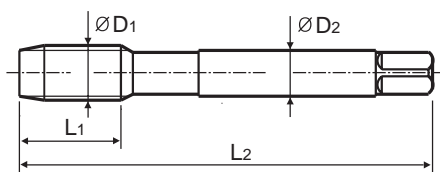
DIN
371/376

6HX

60°

C

Bright

Machine taps
Maschinengewindebohrer

Unit : mm

SIZE	Pitch	EDP No.	Thread Length	Overall Length	Shank Diameter	Square Size	Tapping drill diameter
ØD1	P		L1	L2	ØD2	K	Ød1
M3	× 0.5	T0993206	11	56	3.5	2.7	2.5
M3.5	× 0.6	T0993226	12	56	4	3	2.9
M4	× 0.7	T0993246	13	63	4.5	3.4	3.3
M5	× 0.8	T0993286	15	70	6	4.9	4.2
M6	× 1	T0993316	17	80	6	4.9	5
M8	× 1.25	T0993366	20	90	8	6.2	6.8
M10	× 1.5	T0993426	22	100	10	8	8.5
M12	× 1.75	T0993506	24	110	9	7	10.2
M14	× 2	T0993546	26	110	11	9	12
M16	× 2	T0993606	27	110	12	9	14
M18	× 2.5	T0993656	30	125	14	11	15.5
M20	× 2.5	T0993706	32	140	16	12	17.5

► DIN 371(M2~M10) and DIN 376(M11~M20)

Unit : N/mm²

◎ : Excellent ○ : Good

Steel < 400	Steel < 700	Steel < 850	St. Alloy < 850	St. Alloy ≤ 1200	St. Alloy > 1200	INOX Free < 850	INOX Aust. < 850	INOX < 1000	GG Cast < 500	GG Cast < 1000	GGG Cast < 700	GGG Cast < 1000	Ti < 700	Ti Alloy < 900
									◎	◎				
Ti Alloy ≤ 1300	Ni < 500	Ni Alloy < 900	Ni Alloy ≤ 1400	Cu < 350	Cu Alloy Short	Cu Alloy Long	Cu-Al-Fe < 1500	Al / Mg < 350	Al Wrought	Al Si ≤ 10%	Al Si > 10%	Plastic Thermosoft	Plastic Thermoset	Plastic FRP
					◎					◎				◎